



*Diamond Bridal Styles*



## *Engaging Customers*

Purchasing an engagement ring is a monumental occasion in a couple's life. And here at Stuller, we want to make sure that you have everything you need to deliver a dream ring to your customer. Instead of starting out with a catalog full of choices that may overwhelm them, start out with these trend stories to help get to know them. We've selected just a few representative samples within each style to dial in on a couple's "look." Once you've determined this, use [stuller.com](http://stuller.com) to see the full selection available and find the perfect ring to engage them.



Stuller's award-winning design team is dedicated to providing you with more than just a pretty ring. The Platinum Guild International (PGI) JCK-Las Vegas "Best in Show" piece (*top, left*) is the perfect example. It features open air styling for a wow factor, yet the average consumer can afford it. From sleek, modern styles to vintage-inspired classics, we've got the design and price point combinations you need. That's the beauty of it all.

*From left to right: **68915\*** Round-shape semi-mount with shoulder accents, 7.2mm, 1/3 ct tw, platinum, **\$2,595**. Mounting #**121805** | **68874\*** Round-shape semi-mount with baguettes and shoulder accents, 5.5mm, 1 ct tw, platinum. **\$4,195**. Mounting #**121803** | **68919\*** Asscher-shape semi-mount with side and shoulder accents, 6.5mm, 1/3 ct tw, platinum, **\$3,715**. Mounting #**121804***

*\*Center diamond sold separately.*



## *Sparkling Showstoppers*

Intricate design elements give this style feminine distinction. It's bold, with extra sparkle enhancing the size and brilliance of the center diamond. Celebrity brides have added personality by bringing gemstones such as yellow, pink, and blue sapphires, rubies, and morganite center stones into the limelight. Take this momentum and mix it up a bit. You can even add colorful melee to paint romantic hues.

Our recommendation: Have eight or more in your assortment with at least two of them being in the color family.



*Above, clockwise from left: engagement and matching band **68898** (p 18), engagement **68220** (p 17) set with pink sapphire center and engagement and matching band **68871** (p 14). On facing page, engagement **67721** (p 6) set with yellow sapphire center.*



**67721\*** Round-shape cushion-frame semi-mount with side and shoulder accents, 14kt white. Mounting #**121587**

Apx. Center Size	Semi-mount ct tw	Price
½ ct (5.2mm)	¾	\$2,815
¾ ct (5.8mm)	¾	\$2,755
1 ct (6.5mm)	¾	\$2,935
1¼ ct (7.4mm)	¾	\$2,995

**67721** Diamond matching band, ¾ ct tw, 14kt white, \$1,735. Mounting #**121587**



**67721**



**67802\*** Princess-shape semi-mount with side and shoulder accents, 14kt white. Mounting #**121618**

Apx. Center Size	Semi-mount ct tw	Price
¾ ct (5mm)	¾	\$2,985
1 ct (5.5mm)	¾	\$2,959
1¼ ct (6mm)	¾	\$2,999

**67802** Diamond matching band, ¾ ct tw, 14kt white, \$1,735. Mounting #**121587**



**67802 and 67800**



**67803\*** Round-shape semi-mount with side and shoulder accents, 14kt white. Mounting #**121617**

Apx. Center Size	Semi-mount ct tw	Price
½ ct (5.2mm)	¾	\$2,805
¾ ct (5.8mm)	¾	\$2,835
1 ct (6.5mm)	¾	\$2,879

**67803** Diamond matching band, ¾ ct tw, 14kt white, \$1,735. Mounting #**121587**

\*Center diamond sold separately.

All items available in 14ky, 14kw, 18ky, 18kw, palladium and platinum.

**67799\*** Oval-shape semi-mount with side and shoulder accents, 14kt white. Mounting #**121626**

Apx. Center Size	Semi-mount ct tw	Price
$\frac{3}{4}$ ct (7mm x 5mm)	$\frac{3}{4}$	\$2,975

**67799** Diamond matching band,  $\frac{3}{8}$  ct tw, 14kt white, \$1,735. Mounting #**121587**



**67803** and **67799**

**67800\*** Asscher-shape semi-mount with side and shoulder accents, 14kt white. Mounting #**121641**

Apx. Center Size	Semi-mount ct tw	Price
$\frac{3}{4}$ ct (5.4mm)	$\frac{3}{4}$	\$2,965

**67800** Diamond matching band,  $\frac{3}{8}$  ct tw, 14kt white, \$1,735. Mounting #**121587**



**67801**

**67801\*** Marquise-shape semi-mount with side and shoulder accents, 14kt white. Mounting #**121630**

Apx. Center Size	Semi-mount ct tw	Price
$\frac{3}{4}$ ct (8mm x 4.5mm)	$\frac{3}{4}$	\$2,935

**67801** Diamond matching band,  $\frac{3}{8}$  ct tw, 14kt white, \$1,735. Mounting #**121587**



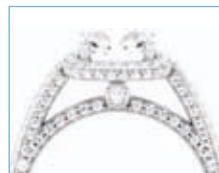




**68925\*** Round-shape cushion frame semi-mount with side and shoulder accents, 14kt white. Mounting #**121892**

Apx. Center Size	Semi-mount ct tw	Price
2 ct (8.2mm)	$\frac{3}{4}$	\$3,489

**68925** Diamond matching band,  $\frac{1}{4}$  ct tw, 14kt white, \$1,289. Mounting #**121892**



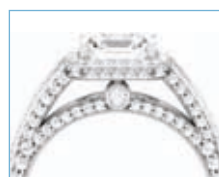
**68925 and 68270**



**68270\*** Emerald-shape semi-mount with side and shoulder accents, 14kt white. Mounting #**121718**

Apx. Center Size	Semi-mount ct tw	Price
$\frac{3}{4}$ ct (6mm x 4mm)	$\frac{3}{4}$	\$2,825
1 ct (7mm x 5mm)	$\frac{3}{4}$	\$2,965
$1\frac{1}{4}$ (7.5mm x 5.5mm)	$\frac{3}{4}$	\$2,839

**68270** Diamond matching band,  $\frac{3}{8}$  ct tw, 14kt white, \$1,735. Mounting #**121587**



**68926**



**68926\*** Asscher-shape split-shank semi-mount with side and shoulder accents, 14kt white. Mounting #**121893**

Apx. Center Size	Semi-mount ct tw	Price
2 ct (7mm)	$\frac{7}{8}$	\$3,739

**68926** Diamond matching band,  $\frac{1}{4}$  ct tw, 14kt white, \$1,299. Mounting #**121893**

\*Center diamond sold separately.

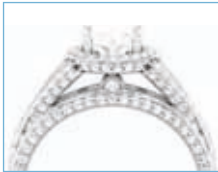
All items available in 14ky, 14kw, 18ky, 18kw, palladium and platinum.



**68927\*** Oval-shape split-shank semi-mount with side and shoulder accents, 14kt white. Mounting #**121894**

Apx. Center Size	Semi-mount ct tw	Price
1 ct (7mm x 5mm)	$\frac{7}{8}$	\$3,755

**68927** Diamond matching band,  $\frac{1}{4}$  ct tw, 14kt white, \$1,299. Mounting #**121894**



**68927** and **68928**



**68928\*** Radiant-shape split-shank semi-mount with side and shoulder accents, 14kt white. Mounting #**121895**

Apx. Center Size	Semi-mount ct tw	Price
1 $\frac{1}{4}$ ct (7.5mm x 5.5mm)	$\frac{9}{8}$	\$4,015

**68928** Diamond matching band,  $\frac{1}{4}$  ct tw, 14kt white, \$1,299. Mounting #**121895**



**68044**



**68044\*** Pear-shape split shank semi-mount with side and shoulder accents, 14kt white. Mounting #**121658**

Apx. Center Size	Semi-mount ct tw	Price
$\frac{1}{2}$ ct (7mm x 5mm)	$\frac{7}{8}$	\$3,285

**68044** Diamond matching band,  $\frac{3}{8}$  ct tw, 14kt white, \$985. Mounting #**121662**





**67860\*** Round-shape cushion-frame split-shank semi-mount with side accents and channel-set shoulder accents, 14kt white. Mounting **#121680**

Apx. Center Size	Semi-mount ct tw	Price
¾ ct (5.8mm)	¾	\$3,075
1 ct (6.5mm)	¾	\$3,285

**67860** Diamond matching band, ⅓ ct tw, 14kt white, \$985. Mounting **#121662**



**67860 and 67859**



**67859\*** Princess-shape split shank semi-mount with side accents and channel-set shoulder accents, 14kt white. Mounting **#121686**

Apx. Center Size	Semi-mount ct tw	Price
1 ct (5.5mm)	¾	\$3,215

**67859** Diamond matching band, ⅓ ct tw, 14kt white, \$985. Mounting **#121662**



**67858 and 67788**



**67858\*** Round-shape split shank semi-mount with side accents and channel-set shoulder accents, 14kt white. Mounting **#121657**

Apx. Center Size	Semi-mount ct tw	Price
½ ct (5.2mm)	¾	\$3,139
¾ ct (5.8mm)	¾	\$3,145
1 ct (6.5mm)	¾	\$3,345

**67858** Diamond matching band, ⅓ ct tw, 14kt white, \$985. Mounting **#121662**

\*Center diamond sold separately.

All items available in 14ky, 14kw, 18ky, 18kw, palladium and platinum.

**67788\*** Oval-shape split shank semi-mount with shoulder and side accents, 14kt white. Mounting #121632

Apx. Center Size	Semi-mount ct tw	Price
¾ ct (7mm x 5mm)	¾	\$3,169
1¼ ct (8mm x 6mm)	¾	\$3,329

**67788** Diamond matching band, ½ ct tw, 14kt white, \$985. Mounting #121662



**67961**

**67961\*** Emerald-shape split shank semi-mount with side accents and channel-set shoulder accents, 14kt white. Mounting #121664

Apx. Center Size	Semi-mount ct tw	Price
1¼ ct (7.5mm x 5.5mm)	¾	\$3,229

**67961** Diamond matching band, ½ ct tw, 14kt white, \$985. Mounting #121662



**68070**

**68070\*** Marquise-shape split shank semi-mount with side accents and channel-set shoulder accents, 14kt white. Mounting #121679

Apx. Center Size	Semi-mount ct tw	Price
¾ ct (8.5mm x 4.5mm)	¾	\$3,255
1¼ ct (9.5mm x 5mm)	¾	\$3,315

**68070** Diamond matching band, ½ ct tw, 14kt white, \$985. Mounting #121662

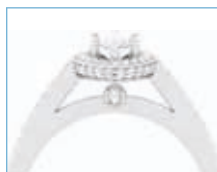




**67789\*** Marquise-shape semi-mount with side accents and channel-set shoulder accents, 14kt white. Mounting #**121631**

Apx. Center Size	Semi-mount ct tw	Price
$\frac{3}{4}$ ct (8mm x 4.5mm)	$\frac{3}{8}$	\$1,805

**67789** Diamond matching band,  $\frac{1}{6}$  ct tw, 14kt white, \$939. Mounting #**121587**



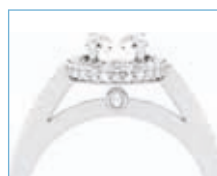
**67789**



**67856\*** Round-shape semi-mount with side accents and channel-set shoulder accents, 14kt white. Mounting #**121620**

Apx. Center Size	Semi-mount ct tw	Price
$\frac{1}{2}$ ct (5.2mm)	$\frac{1}{3}$	\$1,785
$\frac{3}{4}$ ct (5.8mm)	$\frac{1}{3}$	\$1,869
1 ct (6.5mm)	$\frac{3}{8}$	\$1,985

**67856** Diamond matching band,  $\frac{1}{6}$  ct tw, 14kt white, \$939. Mounting #**121587**



**67856 and 67857**



**67791\*** Princess-shape semi-mount with side accents and channel-set shoulder accents, 14kt white. Mounting #**121628**

Apx. Center Size	Semi-mount ct tw	Price
$\frac{3}{4}$ ct (5mm)	$\frac{3}{8}$	\$1,915
1 ct (5.5mm)	$\frac{3}{8}$	\$1,925
$1\frac{1}{4}$ ct (6mm)	$\frac{3}{8}$	\$2,029

**67791** Diamond matching band,  $\frac{1}{6}$  ct tw, 14kt white, \$939. Mounting #**121587**

\*Center diamond sold separately.

All items available in 14ky, 14kw, 18ky, 18kw, palladium and platinum.

**67790\*** Asscher-shape semi-mount with side accents and channel-set shoulder accents, 14kt white. Mounting #121621

Apx. Center Size	Semi-mount ct tw	Price
¾ ct (5.4mm)	¾	\$1,889

**67790** Diamond matching band, ¼ ct tw, 14kt white, \$939. Mounting #121587



**67791 and 67790**

**68046\*** Oval-shape semi-mount with side accents and channel-set shoulder accents, 14kt white. Mounting #121627

Apx. Center Size	Semi-mount ct tw	Price
¾ ct (7mm x 5mm)	¾	\$1,799

**68046** Diamond matching band, ¼ ct tw, 14kt white, \$939. Mounting #121587



**68046**

**67857\*** Round-shape cushion-frame semi-mount with side accents and channel-set shoulder accents, 14kt white. Mounting #121619

Apx. Center Size	Semi-mount ct tw	Price
½ ct (5.2mm)	½	\$1,745
¾ ct (5.8mm)	½	\$1,645
1 ct (6.5mm)	¾	\$2,025
1½ ct (7.4mm)	¾	\$1,959

**67857** Diamond matching band, ¼ ct tw, 14kt white, \$939. Mounting #121587





**68872\*** Marquise-shape semi-mount with side and shoulder accents, 14kt white. Mounting **#121861**

Apx. Center Size	Semi-mount ct tw	Price
1 ct (10mm x 5mm)	$\frac{3}{8}$	\$1,855

**68872** Diamond matching band,  $\frac{1}{4}$  ct tw, 14kt white, \$1,199. Mounting **#121859**



**68872** and **68871**



*Featured on the  
front cover and on p5.*

**68871\*** Pear-shape semi-mount with side and shoulder accents, 14kt white. Mounting **#121862**

Apx. Center Size	Semi-mount ct tw	Price
$1\frac{1}{2}$ ct (10mm x 7mm)	$\frac{1}{2}$	\$1,905

**68871** Diamond matching band,  $\frac{1}{4}$  ct tw, 14kt white, \$1,199. Mounting **#121859**



**68873**



**68873\*** Round-shape semi-mount with shoulder accents, 14kt white. Mounting **#121860**

Apx. Center Size	Semi-mount ct tw	Price
1 ct (6.5mm)	$\frac{3}{8}$	\$1,569

**68873** Diamond matching band,  $\frac{1}{4}$  ct tw, 14kt white, \$1,199. Mounting **#121859**

\*Center diamond sold separately.

All items available in 14ky, 14kw, 18ky, 18kw, palladium and platinum.

**67792\*** Round-shape cushion-frame semi-mount with shoulder accents and Fleur de Lis gallery, 14kt white. Mounting #121602

Apx. Center Size	Semi-mount ct tw	Price
½ ct (5.2mm)	⅓	\$1,129
¾ ct (5.8mm)	⅓	\$1,195
1 ct (6.5mm)	⅓	\$1,275

**67792** Diamond matching band, ⅓ ct tw, 14kt white, \$859. Mounting #121592



**67792** and **67793**

**67793\*** Round-shape semi-mount with shoulder accents and Fleur de Lis gallery, 14kt white. Mounting #121592

Apx. Center Size	Semi-mount ct tw	Price
½ ct (5.2mm)	⅓	\$1,135
¾ ct (5.8mm)	⅓	\$1,165

**67793** Diamond matching band, ⅓ ct tw, 14kt white, \$859. Mounting #121592



**68218**

**68218\*** Princess-shape semi-mount with shoulder accents and Fleur de Lis gallery, 14kt white. Mounting #121734

Apx. Center Size	Semi-mount ct tw	Price
¾ ct (5mm)	⅓	\$1,225
1 ct (5.5mm)	⅓	\$1,279
1 ¼ ct (6mm)	⅓	\$1,279

**68218** Diamond matching band, ⅓ ct tw, 14kt white, \$855. Mounting #121592







**68876\*** Cushion-shape semi-mount with shoulder accents, 14kt white. Mounting **#121868**

Apx. Center Size	Semi-mount ct tw	Price
1½ ct (6.5mm)	⅝	\$2,415

**68876** Diamond matching band, ¼ ct tw, 14kt white, \$1,029. Mounting **#121859**



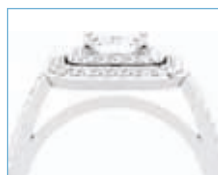
**68876**



**68213\*** Princess-shape Entourage semi-mount with channel-set shoulder accents, 14kt white. Mounting **#121731**

Apx. Center Size	Semi-mount ct tw	Price
½ ct (4.5mm)	½	\$2,579
¾ ct (5mm)	⅝	\$2,575
1 ct (5.5mm)	⅝	\$2,669

**68213** Diamond matching band, ¼ ct tw, 14kt white, \$1,195. Mounting **#121727**



**68213 and 68271**



**68271\*** Emerald-shape Entourage semi-mount with channel-set shoulder accents, 14kt white. Mounting **#121733**

Apx. Center Size	Semi-mount ct tw	Price
1 ct (7mm x 5mm)	⅝	\$2,755

**68271** Diamond matching band, ¼ ct tw, 14kt white, \$1,195. Mounting **#121727**

\*Center diamond sold separately.

All items available in 14ky, 14kw, 18ky, 18kw, palladium and platinum.

**68870\*** Round-shape semi-mount with shoulder accents, 14kt white. Mounting **#121859**

Apx. Center Size	Semi-mount ct tw	Price
1 ct (6.5mm)	$\frac{5}{8}$	\$2,345

**68870** Diamond matching band,  $\frac{1}{4}$  ct tw, 14kt white, **\$1,199**. Mounting **#121859**



**68870**



**68224\*** Round-shape Entourage semi-mount with channel-set shoulder accents, 14kt white. Mounting **#121727**

Apx. Center Size	Semi-mount ct tw	Price
$\frac{1}{2}$ ct (5.2mm)	$\frac{1}{2}$	\$2,505
1 ct (6.5mm)	$\frac{5}{8}$	\$2,605

**68224** Diamond matching band,  $\frac{1}{4}$  ct tw, 14kt white, **\$1,195**. Mounting **#121727**



**68220 and 68224**



**68220\*** Oval-shape Entourage semi-mount with channel-set shoulder accents, 14kt white. Mounting **#121728**

Apx. Center Size	Semi-mount ct tw	Price
$\frac{3}{4}$ ct (7mm x 5mm)	$\frac{5}{8}$	\$2,565
1 $\frac{1}{4}$ ct (8mm x 6mm)	$\frac{5}{8}$	\$2,659

**68220** Diamond matching band,  $\frac{1}{4}$  ct tw, 14kt white, **\$1,195**. Mounting **#121727**



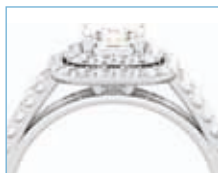
*Shown on p 5 with  
a pink sapphire center.  
Available through Stuller Studio.*



**68898\*** Emerald-shape split-shank semi-mount with shoulder accents, 14kt white. Mounting #121853

Apx. Center Size	Semi-mount ct tw	Price
1 ct (7mm x 5mm)	$\frac{3}{4}$	\$3,059

**68898** Diamond matching band,  $\frac{1}{5}$  ct tw, 14kt white, \$1,189. Mounting #121853



**68898**



**68204\*** Emerald-shape Entourage split-shank semi-mount with channel-set shoulder accents, 14kt white. Mounting #121732

Apx. Center Size	Semi-mount ct tw	Price
1 ct (7mm x 5mm)	$\frac{3}{4}$	\$3,299
1½ ct (8mm x 6mm)	$\frac{3}{4}$	\$3,419

**68204** Diamond matching band,  $\frac{1}{5}$  ct tw, 14kt white, \$1,085. Mounting #121732



**68204 and 68219**



**68219\*** Princess-shape Entourage split-shank semi-mount with channel-set shoulder accents, 14kt white. Mounting #121741

Apx. Center Size	Semi-mount ct tw	Price
$\frac{1}{2}$ ct (4.5mm)	$\frac{3}{4}$	\$3,115
$\frac{3}{4}$ ct (5mm)	$\frac{3}{4}$	\$3,145
1 ct (5.5mm)	$\frac{3}{4}$	\$3,335

**68219** Diamond matching band,  $\frac{1}{5}$  ct tw, 14kt white, \$1,119. Mounting #121741

\*Center diamond sold separately.

All items available in 14ky, 14kw, 18ky, 18kw, palladium and platinum.

**68211\*** Round-shape Entourage split-shank semi-mount with channel-set shoulder accents, 14kt white. Mounting #121730

Apx. Center Size	Semi-mount ct tw	Price
½ ct (5.2mm)	¾	\$3,079

**68211** Diamond matching band, ½ ct tw, 14kt white, \$1,109. Mounting #121730



**68211 and 68203**

**68203\*** Oval-shape Entourage split-shank semi-mount with channel-set shoulder accents, 14kt white. Mounting #121729

Apx. Center Size	Semi-mount ct tw	Price
¾ ct (7mm x 5mm)	¾	\$3,189
1¼ ct (8mm x 6mm)	¾	\$3,315

**68203** Diamond matching band, ½ ct tw, 14kt white, \$1,119. Mounting #121729



**67711**

**67711\*** Round-shape semi-mount with channel-set shoulder accents, 14kt white. Mounting #121590

Apx. Center Size	Semi-mount ct tw	Eng. Price	Band ct tw	Band Price
¼ ct (4.1mm)	½	\$1,089	⅙	\$829
⅓ ct (4.5mm)	½	\$1,125	⅙	\$789
½ ct (5.2mm)	½	\$1,225	⅙	\$969

**67711** Diamond matching band, 14kt white. Mounting #121590





## *Vintage Inspiration*

Vintage-inspired engagement rings are always on trend. The heirloom and art deco rings we've seen for the past several seasons are still major players, but a hint of floral is also making its presence known. Make sure to touch upon these romantic styles. Your customers will appreciate the ornate design that conveys intense passion.

Our recommendation: Make sure to have on hand at least five vintage-inspired styles with two or more being floral.



*Above, clockwise from left: engagement **68797** (p 23), engagement **68796** (p 23) and engagement and matching band **68877** (p 25). On facing page, engagement and matching band **68794** (p 23).*





**68748\*** Round-shape semi-mount with channel-set shoulder accents, 14kt white. Mounting #**121826**

Apx. Center Size	Semi-mount ct tw	Price
1 ct (6.5mm)	$\frac{1}{5}$	\$1,295

**68748** Diamond matching band,  $\frac{1}{5}$  ct tw, 14kt white, \$909. Mounting #**121826**



**68748**



**68749\*** Round-shape semi-mount with channel-set shoulder accents, 14kt white. Mounting #**121827**

Apx. Center Size	Semi-mount ct tw	Price
$\frac{3}{4}$ ct (5.8mm)	$\frac{1}{5}$	\$1,455

**68749** Diamond matching band, .08 ct tw, 14kt white, \$679. Mounting #**121827**



**68749 and 68795**



**68795\*** Round-shape semi-mount, 14kt white. Mounting #**121831** (Only available in 14kt white.)

Apx. Center Size	Semi-mount ct tw	Price
$\frac{3}{4}$ ct (5.8mm)	$\frac{1}{2}$	\$2,379

**68795** Diamond matching band,  $\frac{1}{5}$  ct tw, 14kt white, \$1,005. Mounting #**121831**

\*Center diamond sold separately.

All items available in 14ky, 14kw, 18ky, 18kw, palladium and platinum.



**68797\*** Round-shape semi-mount with channel-set shoulder accents, 14kt white. Mounting #**121837** )

Apx. Center Size	Semi-mount ct tw	Price
½ ct (5.2mm)	¾	\$1,645

**68797** Diamond matching band, .07 ct tw, 14kt white, \$575. Mounting #**121837**



**68797**



**68796\*** Round-shape semi-mount, 14kt white. Mounting #**121838**

Apx. Center Size	Semi-mount ct tw	Price
½ ct (5.2mm)	¼	\$1,029



**68796**



**68794**

**68794\*** Round-shape semi-mount with Fleur de Lis and channel set shoulder accents, 14kt white. Mounting #**121839**

Apx. Center Size	Semi-mount ct tw	Price
¾ ct (5.8mm)	½	\$2,399

**68794** Diamond matching band, ½ ct tw, 14kt white, \$915. Mounting #**121839**





**68891\*** Round-shape semi-mount with shoulder accents, 14kt white. Mounting **#121880**

Apx. Center Size	Semi-mount ct tw	Price
1 1/4 ct (7mm)	1/4	\$1,485

**68891** Diamond matching band, 1/4 ct tw, 14kt white, \$1,245. Mounting **#121880**



**68891 and 67787**



**67787\*** Round-shape semi-mount with shoulder accents, 14kt white. Mounting **#121598**

Apx. Center Size	Semi-mount ct tw	Price
1 ct (6.5mm)	1/8	\$1,135

**67787** Diamond matching band, 1/8 ct tw, 14kt white, \$705. Mounting **#121598**



**67850**



**67850\*** Round-shape semi-mount with shoulder accents, 14kt white. Mounting **#121674**

Apx. Center Size	Semi-mount ct tw	Price
2 ct (8.2mm)	1/3	\$2,185

**121674** Matching band, 14kt white, \$335.

\*Center diamond sold separately.

All items available in 14ky, 14kw, 18ky, 18kw, palladium and platinum.

**68877\*** Radiant-shape semi-mount with shoulder detail and diamond accents, 14kt white. Mounting **#121866**

Apx. Center Size	Semi-mount ct tw	Price
1 ct (7mm x 5mm)	½	\$1,205

**68877** Diamond matching band, ½ ct tw, 14kt white, \$1,099. Mounting **#121866**



**68877 and 67796**



**67796\*** Round-shape semi-mount with shoulder detail and diamond accents, 14kt white. Mounting **#121594**

Apx. Center Size	Semi-mount ct tw	Price
1 ct (6.5mm)	½	\$1,055

**67796** Diamond matching band, ½ ct tw, 14kt white, \$949. Mounting **#121594**



**67852**



**67852\*** Round-shape semi-mount with shoulder accents, 14kt white. Mounting **#121669**

Apx. Center Size	Semi-mount ct tw	Price
1 ct (6.5mm)	½	\$1,339

**121669** Matching band, 14kt white, \$489.





**68893\*** Round-shape semi-mount with shoulder accents, 14kt white. Mounting **#121877**

<b>Apx. Center Size</b>	<b>Semi-mount ct tw</b>	<b>Price</b>
1 ct (6.5mm)	1½	<b>\$4,119</b>

**68893** Diamond matching band, ¾ ct tw, 14kt white, \$1,529. Mounting **#121877**



**68893**



**67963** Round-center engagement ring with channel-set shoulder accents, 14kt white. Sold complete with center diamond. Mounting **#121696**

<b>ct tw</b>	<b>Price</b>
½	<b>\$2,009</b>
¾	<b>\$2,809</b>

**67963** Diamond matching band, ½ ct tw, 14kt white, \$829. Mounting **#121696**



**67963 and 67955**



**67958**



**67958** Round-center engagement ring, 14kt white. Sold complete with center diamond. Mounting **#121695**

<b>ct tw</b>	<b>Price</b>
¾	<b>\$2,605</b>

**121695** Matching band, 14kt white, \$365.

\*Center diamond sold separately.

All items available in 14ky, 14kw, 18ky, 18kw, palladium and platinum.

**67953** Round-center engagement ring with shoulder accents, 14kt white. Sold complete with center diamond. Mounting #**121677**

Apx. ct tw	Eng. Price	Band Price
½	\$2,005	\$375
¾	\$3,269	\$369

**121677** Matching band, 14kt white.

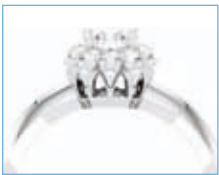


**67953**

**67965** Round-center engagement ring, 14kt white. Sold complete with center diamond. Mounting #**121703**

ct tw	Eng. Price	Band Price
⅓	\$1,585	\$409
½	\$2,785	\$375

**121703** Matching band, 14kt white.



**67965**

**67955** Round-center engagement ring, 14kt white. Sold complete with center diamond. Mounting #**121688**

ct tw	Price
⅓	\$1,389
½	\$2,139

**121688** Matching band, 14kt white, \$465.





**67722\*** Round-shape semi-mount with shoulder accents, 14kt white. Mounting **#121589**

Apx. Center Size	Semi ct tw	Eng. Price	Band Price
$\frac{3}{8}$ ct (4.4mm)	$\frac{1}{4}$	\$1,239	\$399
$\frac{1}{2}$ ct (5.2mm)	$\frac{1}{4}$	\$1,255	\$355
$\frac{3}{4}$ ct (5.8mm)	$\frac{1}{4}$	\$1,245	\$655
1 ct (6.5mm)	$\frac{1}{4}$	\$1,265	\$375

**121589** Matching band, 14kt white.



**67722** and **67798**



**67798\*** Asscher-shape semi-mount with shoulder accents, 14kt white. Mounting **#121599**

Apx. Center Size	Semi-mount ct tw	Price
$\frac{3}{4}$ ct (5.4mm)	$\frac{1}{4}$	\$1,259

**121599** Matching band, 14kt white, \$335.



**67797** and **67581**



**67797\*** Asscher-shape semi-mount with pavé shoulder accents, 14kt white. Mounting **#121629**

Apx. Center Size	Semi-mount ct tw	Price
$\frac{3}{4}$ ct (5.4mm)	$\frac{3}{8}$	\$2,745

**67797** Diamond matching band,  $\frac{3}{8}$  ct tw, 14kt white, \$1,925. Mounting **#121560**

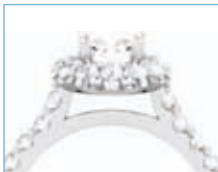
\*Center diamond sold separately.

All items available in 14ky, 14kw, 18ky, 18kw, palladium and platinum.

**68205\*** Round-shape semi-mount with shoulder accents, 14kt white. Mounting **#121737**

Apx. Center Size	Semi-mount ct tw	Price
¾ ct (5.8mm)	¾	\$2,649

**68205** Diamond matching band, ½ ct tw, 14kt white, \$1,769. Mounting **#121737**



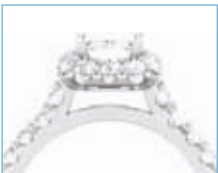
**68205**



**68212\*** Princess-shape semi-mount with shoulder accents, 14kt white. Mounting **#121738**

Apx. Center Size	Semi-mount ct tw	Price
¾ ct (5mm)	¾	\$2,719
1 ct (5.5mm)	¾	\$2,849

**68212** Diamond matching band, ½ ct tw, 14kt white, \$1,769. Mounting **#121737**



**68212**



**67581\*** Round-shape semi-mount with pavé shoulder accents, 14kt white. Mounting **#121570**

Apx. Center Size	Semi-mount ct tw	Price
1 ct (6.5mm)	¾	\$2,925

**67581** Diamond matching band, ¾ ct tw, 14kt white, \$1,925. Mounting **#121560**







## *Impeccable Glam*

When a diamond solitaire just isn't enough, these are the styles that win hearts. The clean look of a single center stone commands attention. And the diamond intensive shank adds sophistication without compromising the integrity of the design.

Our recommendation: Showcase up to ten chic styles from this category to make your customers say, "Wow."



*Above, clockwise from left: engagement and matching band **67579** (p 34), engagement **68896** (p32), engagement **68847** (p 33) and engagement and matching band **68043** (p 36). On facing page, engagement and matching band **67780** (p 39).*



**68896\*** Round-shape split-shank semi-mount with shoulder and gallery accents, 14kt white. Mounting #121851

Apx. Center Size	Semi-mount ct tw	Price
1 1/4 ct (7mm)	1/2	\$2,895

**68896** Diamond matching band, 1/2 ct tw, 14kt white, \$1,045. Mounting #121851



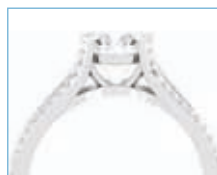
**68896**



**67864\*** Round-shape semi-mount with split euro shank and channel-set shoulder accents, 14kt white. Mounting #121670

Apx. Center Size	Semi-mount ct tw	Price
1 ct (6.5mm)	1/4	\$1,585

**67864** Diamond matching band, 1/4 ct tw, 14kt white, \$859. Mounting #121670



**67864**



**67855\*** Round-shape semi-mount with pavé shoulder accents, 14kt white. Mounting #121671

Apx. Center Size	Semi-mount ct tw	Price
2 ct (8.2mm)	5/8	\$2,755

**67855** Diamond matching band, 1/2 ct tw, 14kt white, \$1,655. Mounting #121671



**67855**

\*Center diamond sold separately.

All items available in 14ky, 14kw, 18ky, 18kw, palladium and platinum.

**68847\*** Round-shape semi-mount with shoulder accents, 14kt white. Mounting **#121832**

Apx. Center Size	Semi-mount ct tw	Price
¾ ct (5.8mm)	⅓	\$1,579

**121832** Matching band, 14kt white, \$399.



**68847**

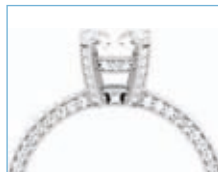
**67964\*** Round-shape semi-mount with shoulder accents, 14kt white. (Princess version also available, **68139**) Mounting **#121699**

Apx. Center Size	Semi-mount ct tw	Price
½ ct (5.2mm)	⅓	\$1,815
¾ ct (5.8mm)	¾	\$1,825

**67964** Diamond matching band, ½ ct tw, 14kt white, \$1,035. Mounting **#121699**



**67964**



**67795**

**67795\*** Round-shape semi-mount with shoulder accents, 14kt white. Mounting **#121588**

Apx. Center Size	Semi-mount ct tw	Price
1½ ct (7.4mm)	⅓	\$1,875

**67795** Diamond matching band, ½ ct tw, 14kt white, \$909. Mounting **#121588**

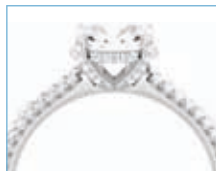




**68897\*** Round-shape semi-mount with pavé shoulder and gallery accents, 14kt white. Mounting #121850

Apx. Center Size	Semi-mount ct tw	Price
1½ ct (7.4mm)	⅓	\$1,765

**68897** Diamond matching band, ⅓ ct tw, 14kt white, \$1,265. Mounting #121850



**68897**



**68272\*** Princess-shape semi-mount with channel-set shoulder accents, 14kt white. Mounting #121736

Apx. Center Size	Semi-mount ct tw	Price
¾ ct (5mm)	½	\$2,085
1 ct (5.5mm)	½	\$2,059

**68272** Diamond matching band, ½ ct tw, 14kt white, \$985. Mounting #121736



**68272**



**67579\*** Round-shape semi-mount with round side and pavé shoulder accents, 14kt white. Mounting #121559

Apx. Center Size	Semi-mount ct tw	Price
½ ct (5.2mm)	¾	\$1,939
¾ ct (5.8mm)	¾	\$1,915
1 ct (6.5mm)	¾	\$1,985

**67580** Diamond matching band, ½ ct tw, 14kt white, \$1,915. Mounting #121560

\*Center diamond sold separately.

All items available in 14ky, 14kw, 18ky, 18kw, palladium and platinum.

**67601\*** Asscher-shape semi-mount with princess side and pavé shoulder accents, 14kt white. Mounting **#121568**

Apx. Center Size	Semi-mount ct tw	Price
¾ ct (5.4mm)	½	\$1,959

**67580** Diamond matching band, ½ ct tw, 14kt white, \$1,915. Mounting **#121560**



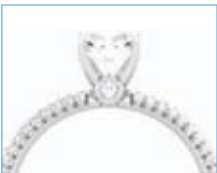
**67601 and 67770**



**68878\*** Round-shape semi-mount with round side and pavé shoulder accents, 14kt white. Mounting **#121857**

Apx. Center Size	Semi-mount ct tw	Price
1 ct (6.5mm)	½	\$3,005

**68878** Diamond matching band, ¼ ct tw, 14kt white, \$1,409. Mounting **#121857**



**68878 and 67579**



**67770\*** Princess-shape semi-mount with princess side and pavé shoulder accents, 14kt white. Mounting **#121567**

Apx. Center Size	Semi-mount ct tw	Price
1 ct (5.5mm)	½	\$1,975

**67580** Diamond matching band, ½ ct tw, 14kt white, \$1,915. Mounting **#121560**





**68880\*** Antique cushion-shape semi-mount with shoulder accents, 14kt white. Mounting #**121870**

Apx. Center Size	Semi-mount ct tw	Price
1 ¼ ct (8mm x 6mm)	¾	\$1,719

**68880** Diamond matching band, ¾ ct tw, 14kt white, \$1,609. Mounting #**121870**



**68880**



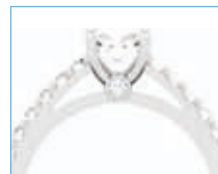
**68043\*** Round-shape semi-mount with shoulder accents, 14kt white. Mounting #**121710**

Apx. Center Size	Semi-mount ct tw	Price
¾ ct (5.8mm)	¾	\$2,075

**68043** Diamond matching band, ¾ ct tw, 14kt white, \$2,199. Mounting #**121710**



**68043**



**67866**

**67866\*** Round-shape semi-mount with side and shoulder accents, 14kt white. Mounting #**121663**

Apx. Center Size	Semi ct tw	Eng. Price	Band ct tw	Band Price
½ ct (5.2mm)	¾	\$1,609	¾	\$1,489
¾ ct (5.8mm)	½	\$1,845	½	\$1,765
1 ct (6.5mm)	½	\$1,839	½	\$1,765

**67866** Diamond matching band, 14kt white. Mounting #**121663**



\*Center diamond sold separately.

All items available in 14ky, 14kw, 18ky, 18kw, palladium and platinum.



**68879\*** Radiant-shape semi-mount with channel-set shoulder accents, 14kt white. Mounting #121869

Apx. Center Size	Semi-mount ct tw	Price
3½ ct (10mm x 8mm)	½	\$1,205

**68879** Diamond matching band, ½ ct tw, 14kt white, \$1,545. Mounting #121869



**68879**



**67853\*** Princess-shape semi-mount with euro shank and channel-set shoulder accents, 14kt white. Mounting #121681

Apx. Center Size	Semi-mount ct tw	Price
1 ct (5.5mm)	¼	\$1,545

**67853** Diamond matching band, ½ ct tw, 14kt white, \$1,159. Mounting #121681



**67853**



**68042**

**68042\*** Semi-mount engagement base with round-shape head, ¾ ct tw, 14kt white, \$2,605. (Shown with 1 ct head #312.) Mounting #121705

**68042** Diamond matching band, ¾ ct tw, 14kt white, \$2,749. Mounting #121705





**68916\*** Oval-shape semi-mount with round side and channel-set shoulder accents, 14kt white. Mounting #121888

Apx. Center Size	Semi-mount ct tw	Price
1½ ct (7.5mm x 5.5mm)	¾	\$1,745

**68916** Diamond matching band, ½ ct tw, 14kt white, \$1,545. Mounting #121869



**68916**



**67584\*** Round-shape semi-mount with round side and channel-set shoulder accents, 14kt white. Mounting #121564

Apx. Center Size	Semi ct tw	Eng. Price	Band ct tw	Band Price
½ ct (5.2mm)	½	\$1,485	½	\$1,415
¾ ct (5.8mm)	½	\$1,629	½	\$1,675
1 ct (6.5mm)	½	\$1,785	½	\$1,675

**67584** Diamond matching band, 14kt white. Mounting #121565



**67584 and 67708**



**67583\*** Princess-shape semi-mount with princess side and channel-set shoulder accents, 14kt white. Mounting #121566

Apx. Center Size	Semi ct tw	Eng. Price	Band ct tw	Band Price
½ ct (4.5mm)	½	\$1,575	½	\$1,419
¾ ct (5mm)	¾	\$1,679	½	\$1,675
1 ct (5.5mm)	¾	\$1,515	½	\$1,675
1¼ ct (6mm)	½	\$1,679	½	\$1,675

**67583** Diamond matching band, 14kt white. Mounting #121566

\*Center diamond sold separately.

All items available in 14ky, 14kw, 18ky, 18kw, palladium and platinum.

**68917\*** Antique cushion-shape semi-mount with round side and channel-set shoulder accents, 14kt white. Mounting **#121887**

Apx. Center Size	Semi-mount ct tw	Price
2 ct (8mm x 6mm)	½	\$1,839

**68917** Diamond matching band, ½ ct tw, 14kt white, **\$1,719**. Mounting **#121887**



**68917**



**67708\*** Round-shape semi-mount with round side and channel-set shoulder accents, 14kt white. Mounting **#121574**

Apx. Center Size	Semi-mount ct tw	Price
⅜ ct (4.4mm)	⅛	\$859
½ ct (5.2mm)	⅛	\$1,739
¾ ct (5.8mm)	½	\$1,809
1 ct (6.5mm)	⅝	\$2,305

**67708** Diamond matching band, ½ ct tw, 14kt white, **\$1,709**. Mounting **#121576**



**67583 and 67780**



**67780\*** Emerald-shape semi-mount with princess side and channel-set shoulder accents, 14kt white. Mounting **#121600**

Apx. Center Size	Semi-mount ct tw	Price
1 ct (7mm x 5mm)	⅜	\$1,739
1½ ct (8mm x 6mm)	½	\$1,835

**67780** Diamond matching band, ⅜ ct tw, 14kt white, **\$1,675**. Mounting **#121565**





**67707\*** Princess-shape semi-mount with princess side and channel-set shoulder accents, 14kt white. Mounting #**121573**

Apx. Center Size	Semi ct tw	Eng. Price	Band ct tw	Band Price
½ ct (4.5mm)	¾	\$1,919	¾	\$1,835
¾ ct (5mm)	7⁄8	\$2,585	7⁄8	\$2,429
1 ct (5.5mm)	7⁄8	\$2,609	7⁄8	\$2,429
1¼ ct (6mm)	7⁄8	\$2,619	7⁄8	\$2,429

**67707** Diamond matching band, 14kt white. Mounting #**121593**



**67707** and **68045**



**68918** Radiant-shape semi-mount with princess side and channel-set shoulder accents, 14kt white. Mounting #**121886**

Apx. Center Size	Semi-mount ct tw	Price
1½ ct (7mm x 5mm)	¾	\$1,949

**68918** Diamond matching band, ¾ ct tw, 14kt white, \$1,809. Mounting #**121865**



**68918**



**68045\*** Emerald-shape semi-mount with princess side and channel-set shoulder accents, 14kt white. Mounting #**121660**

Apx. Center Size	Semi ct tw	Eng. Price	Band ct tw	Band Price
1 ct (7mm x 5mm)	¾	\$1,949	¾	\$1,835
1½ ct (8 x 6mm)	¾	\$2,009	7⁄8	\$2,429

**68045** Diamond matching band, 14kt white. Mounting #**121593**

\*Center diamond sold separately.

All items available in 14ky, 14kw, 18ky, 18kw, palladium and platinum.

**67865\*** Asscher-shape semi-mount with round side and channel set shoulder accents, 14kt white. Mounting #**121575**

Apx. Center Size	Semi-mount ct tw	Price
¾ ct (5.4mm)	⅞	\$3,935

**67865** Diamond matching band, ⅞ ct tw, 14kt white, \$3,815. Mounting #**121575**



**67865**



**68890\*** Princess-shape semi-mount with channel-set shoulder accents, 14kt white. Mounting #**121865**

Apx. Center Size	Semi-mount ct tw	Price
1½ ct (6.5mm)	⅜	\$2,105

**68890** Diamond matching band, ⅜ ct tw, 14kt white, \$1,809. Mounting #**121865**



**68890**





## *Truly Classic*

The all time classic look, the solitaire, will never steer you wrong. With gold, platinum, and diamond market prices going upwards, solitaires provide you options that minimize the pricing impact. Round and princess cuts are the most popular, but oval, pear, and emerald cuts are close behind.

Our recommendation: Stock as many as you can of this style, as you will never have too many.



*Above, clockwise from left: engagement **121856** (p 44), engagement **67577** (p 46) and engagement and matching band **121855** (p 44). On facing page, engagement **67779** (p 45).*





**121856\*** Emerald-shape solitaire mounting, 14kt white.

Apx. Center Size	Semi-mount ct tw	Price
1½ ct (7mm x 5mm)	-	\$395

**121855** Matching band, 14kt white, \$269.



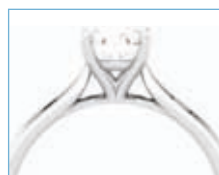
**121856 and 121872**



**121872\*** Antique cushion-shape solitaire mounting, 14kt white.

Apx. Center Size	Semi-mount ct tw	Price
4 ct (10mm x 8mm)	-	\$535

**121855** Matching band, 14kt white, \$269.



**121855**



**121855\*** Round-shape solitaire mounting, 14kt white.

Apx. Center Size	Semi-mount ct tw	Price
1 ct (6.5mm)	-	\$405

**121855** Matching band, 14kt white, \$269.

**68892\*** Cushion-shape semi-mount with diamond gallery accents, 14kt white. Mounting #**121878**

Apx. Center Size	Semi-mount ct tw	Price
2 ct (7.5mm x 7.5mm)	.08	\$759

**121878** Matching band, 14kt white, \$335.



**68892**



**67779\*** Oval-shape semi-mount with round side accents, 14kt white. Mounting #**121643**

Apx. Center Size	Semi-mount ct tw	Price
½ ct (6mm x 4mm)	.02	\$679
¾ ct (7mm x 5mm)	.03	\$785
1 ct (7.5mm x 5.5mm)	.03	\$709
1¼ ct (8mm x 6mm)	.03	\$889



**67779 and 67778**



**67778\*** Round-shape semi-mount with round side accents, 14kt white. Mounting #**121857**

Apx. Center Size	Semi-mount ct tw	Price
¼ ct (4.1mm)	.025	\$489
½ ct (5.2mm)	.03	\$589
¾ ct (5.8mm)	.04	\$695
1 ct (6.5mm)	.04	\$785
1¼ ct (7mm)	.05	\$795
1½ ct (7.4mm)	.04	\$745





**67960\*** Emerald-shape semi-mount with princess side accents, 14kt white. Mounting #**121640**

Apx. Center Size	Semi-mount ct tw	Price
½ ct (6mm x 4mm)	.07	\$669
1 ct (7mm x 5mm)	.05	\$795
1¼ ct (7.5mm x 5.5mm)	.07	\$885
1½ ct (8mm x 6mm)	.07	\$939

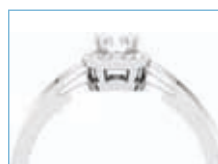


**67960 and 67577**



**67577\*** Princess-shape semi-mount with princess side accents, 14kt white. Mounting #**121558**

Apx. Center Size	Semi-mount ct tw	Price
½ ct (4mm)	.03	\$585
½ ct (4.5mm)	.03	\$595
¾ ct (5mm)	.03	\$625
1 ct (5.5mm)	.03	\$649
1¼ ct (6mm)	.07	\$909



**67709**



**67709\*** Round-shape semi-mount, 14kt white. Mounting #**121578**

Apx. Center Size	Semi ct tw	Eng. Price	Band Price
¼ ct (4.1mm)	.07	\$769	\$349
½ ct (4.5mm)	.07	\$779	\$365
½ ct (5.2mm)	.08	\$805	\$369

**121578** Matching band, 14kt white.

\*Center diamond sold separately.

All items available in 14ky, 14kw, 18ky, 18kw, palladium and platinum.

**67571\*** Round-shape semi-mount with round side accents, 14kt white. Mounting #**121422**

Apx. Center Size	Semi-mount ct tw	Price
1 ct (6.5mm)	.025	\$775



**67571**



**64151** Princess-center engagement ring, 14kt white. Sold complete with center diamond. Mounting #**120978**

Apx. Center Size	Semi-mount ct tw	Price
¼ct (3.5mm)	-	\$1,395
½ct (4.5mm)	-	\$3,815



**64151**



**67713**

**67713\*** Round-shape semi-mount with round side accents, 14kt white. Mounting #**121597**

Apx. Center Size	Semi-mount ct tw	Price
½ ct (5.2mm)	¼o	\$889

**67713** Diamond matching band, .05 ct tw, 14kt white, \$575. Mounting #**121597**





## *Embellished Elegance*

Highly requested by customers, this style shapes up to be perfect for customers who want to take the classic solitaire to the next level. Fresh center shapes, not-so-common half-moon or trapezoid-shaped side stones, and even a splash of color give you the option to make a statement in a budget-friendly way.

Our recommendation: Add eight to ten of these to your line with at least two color options.



Above, from top to bottom: engagement **68881** (p 50), engagement **68049** (p 54) set with blue sapphire center and engagement **67786** (p 53). On facing page, engagement **67786** (p 53) set with radiant-cut yellow sapphire center.



**68881\*** Oval-shape semi-mount with round side diamonds and channel-set shoulder accents, 14kt white. Mounting **#121867**

Apx. Center Size	Semi-mount ct tw	Price
1 ¼ ct (8mm x 6mm)	¾	\$4,709

**68881** Diamond matching band, ¼ ct tw, 14kt white, \$1,189. Mounting **#121867**



**68881 and 68875**



**67861\*** Round-shape semi-mount with round side diamonds and channel-set shoulder accents, 14kt white. Mounting **#121666**

Apx. Center Size	Semi ct tw	Eng. Price	Band ct tw	Band Price
½ ct (5.2mm)	¾	\$3,255	½	\$1,529
1 ct (6.5mm)	1 ½	\$14,175	½	\$2,115

**67861** Matching channel-set diamond band, 14kt white. Mounting **#121666**



**67861**



**67959** Princess-cut three-stone engagement ring with princess side diamonds, 14kt white. Sold complete with center. Mounting **#121608**

Eng. ct tw	Eng. Price	Band Price
½	\$2,129	\$455
1	\$5,319	\$429

**121608** Matching band, 14kt white.

\*Center diamond sold separately.

All items available in 14ky, 14kw, 18ky, 18kw, palladium and platinum.



**68875\*** Oval-shape semi-mount with round side diamonds and shoulder accents, 14kt white. Mounting #**121871**

Apx. Center Size	Semi-mount ct tw	Price
1¼ ct (8mm x 6mm)	⅞	\$4,809

**68875** Diamond matching band, ¼ ct tw, 14kt white, \$1,019. Mounting #**121871**



**67782** and **67959**

**67782\*** Round-shape three-stone semi-mount with round side diamonds and channel-set shoulder accents, 14kt white. Mounting #**121604**

Apx. Center Size	Semi-mount ct tw	Price
⅓ ct (4.2mm)	⅜	\$1,415
½ ct (5.2mm)	¾	\$2,859

**67782** Channel-set diamond matching band, ¼ ct tw, 14kt white, \$1,225. Mounting #**121604**



**68904**

**68904\*** Round-shape three-stone semi-mount with round side diamonds, channel-set shoulder accents and diamond accented galleries, 14kt white. Mounting #**121884**

Apx. Center Size	Semi-mount ct tw	Price
1 ct (6.5mm)	1¼	\$16,265

**68904** Diamond matching band, ¼ ct tw, 14kt white, \$1,099. Mounting #**121884**





**68894\*** Radiant-shape three-stone semi-mount with trillion side diamonds, 14kt white. Mounting #121876

Apx. Center Size	Semi-mount ct tw	Price
1 ¼ ct (7.5mm x 5.5mm)	¾	\$2,625

**121876** Matching band, 14kt white, 1.05 dwt \$295.



**68894**



**68048\*** Princess-shape three-stone semi-mount with trapezoid side diamonds, 14kt white. Mounting #121623

Apx. Center Size	Semi ct tw	Eng. Price	Band Price
1 ct (5.5mm)	½	\$3,919	\$489
1 ¼ ct (6mm)	½	\$4,039	\$455

**121623** Matching band, 14kt white.



**68048 and 68047**



**68047\*** Emerald-shape three-stone semi-mount with trapezoid side diamonds, 14kt white. Mounting #121579

Apx. Center Size	Semi ct tw	Eng. Price	Band Price
1 ct (7mm x 5mm)	¾	\$7,649	\$455
1 ½ ct (8mm x 6mm)	¾	\$7,645	\$435
2 ct (8.5mm x 6.5mm)	¾	\$7,579	\$429

**121579** Matching band, 14kt white.

\*Center diamond sold separately.

All items available in 14ky, 14kw, 18ky, 18kw, palladium and platinum.

**67784\*** Princess-shape three-stone semi-mount with trapezoid side diamonds and channel-set shoulder accents, 14kt white. Mounting #**121622**

Apx. Center Size	Semi-mount ct tw	Price
1 ct (5.5mm)	½	\$4,279
1¼ ct (6.0mm)	½	\$4,335

**67784** Diamond matching band, ⅛ ct tw, 14kt white, \$795. Mounting #**121622**



**67784** and **67786**



**67862\*** Princess-shape three-stone semi-mount with princess side diamonds and channel-set princess shoulder accents, 14kt white. Mounting #**121667**

Apx. Center Size	Semi-mount ct tw	Price
¾ ct (5mm)	1	\$3,205

**67862** Channel-set diamond matching band, ½ ct tw, 14kt white, \$1,525. Mounting #**121667**



**67862**



**67786\*** Emerald-shape three-stone semi-mount with trapezoid side diamonds and channel-set shoulder accents, 14kt white. Mounting #**121603**

Apx. Center Size	Semi-mount ct tw	Price
1 ct (7mm x 5mm)	½	\$4,275
1½ ct (8mm x 6mm)	¾	\$7,959
2 ct (8.5mm x 6.5mm)	¾	\$7,955





**68083\*** Oval-shape three-stone semi-mount with half-moon side diamonds, 14kt white. Mounting #121634

Apx. Center Size	Semi ct tw	Eng. Price	Band Price
1 ct (7.5mm x 5.5mm)	½	\$3,895	\$419
1¼ ct (8mm x 6mm)	½	\$3,919	\$439

**121634** Matching band, 14kt white.



**68083**



*Shown on p.48 with a blue sapphire center.  
Available through Stuller Studio.*

**68049\*** Princess-shape three-stone semi-mount with half moon side diamonds, 14kt white. Mounting #121637

Apx. Center Size	Semi ct tw	Eng. Price	Band Price
1 ct (5.5mm)	½	\$3,959	\$489
1¼ ct (6.0mm)	½	\$3,965	\$449

**121637** Matching band, 14kt white.



**68049 and 67863**



**67863\*** Emerald-shape three-stone semi-mount with half moon side diamonds, 14kt white. Mounting #121639

Apx. Center Size	Semi-mount ct tw	Price
1½ ct (8mm x 6mm)	¾	\$7,899

**121639** Matching band, 14kt white, \$465.

**68082\*** Oval-shape three-stone semi-mount with half-moon side diamonds and channel-set shoulder accents, 14kt white. Mounting **#121633**

Apx. Center Size	Semi ct tw	Eng. Price	Band ct tw	Band Price
1 ct (7.5 x 5.5mm)	$\frac{5}{8}$	\$4,255	$\frac{1}{8}$	\$875
1¼ ct (8 x 6mm)	$\frac{3}{4}$	\$8,299	$\frac{1}{8}$	\$855

**68082** Diamond matching band, 14kt white. Mounting **#121633**



**68082**



**67785\*** Asscher-shape three-stone semi-mount with half moon side diamonds and channel-set shoulder accents, 14kt white. Mounting **#121635**

Apx. Center Size	Semi ct tw	Eng. Price	Band ct tw	Band Price
1 ct (5.5mm)	$\frac{1}{2}$	\$4,239	$\frac{1}{8}$	\$865
1¼ ct (6.0mm)	$\frac{1}{2}$	\$4,189	$\frac{1}{8}$	\$839

**67785** Diamond matching band, 14kt white. Mounting **#121635**



**67785 and 67867**



**67867\*** Emerald-shape three-stone semi-mount with half moon side diamonds and channel-set shoulder accents, 14kt white. Mounting **#121638**

Apx. Center Size	Semi-mount ct tw	Price
1½ ct (8mm x 6mm)	$\frac{3}{4}$	\$8,215

**67867** Diamond matching band,  $\frac{1}{8}$  ct tw, 14kt white, \$909. Mounting **#121638**





**67781\*** Princess-shape three-stone semi-mount with princess side diamonds and channel-set shoulder accents, 14kt white. Mounting #121609

Apx. Center Size	Semi ct tw	Eng. Price	Band ct tw	Band Price
¼ ct (3.5mm)	½	\$1,635	⅕	\$1,059
½ ct (4.5mm)	¾	\$2,685	⅜	\$795

**67781** Matching Diamond band, 14kt white. Mounting #121609



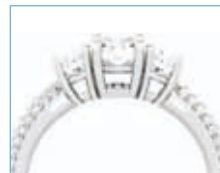
**67781**



**67783\*** Round-shape three-stone semi-mount with round side diamonds and pavé shoulder accents, 14kt white. Mounting #121624

Apx. Center Size	Semi-mount ct tw	Price
½ ct (5.2mm)	¾	\$3,339

**67783** Diamond matching band, ½ ct tw, 14kt white, \$1,925. Mounting #121560



**67783**



**68903**

**68903\*** Round-shape three-stone semi-mount with round side diamonds and shoulder accents, 14kt white. Mounting #121882

Apx. Center Size	Semi-mount ct tw	Price
1¼ ct (7mm)	¾	\$3,579

**68903** Matching Diamond band, ½ ct tw, 14kt white, \$1,265. Mounting #121883



\*Center diamond sold separately.

All items available in 14ky, 14kw, 18ky, 18kw, palladium and platinum.



## *Our Exacting Devotion to Diamonds & Gemstones*

Whatever your customer's desire, whatever your specs,

Stuller has the widest variety of loose diamonds  
and unique gemstones.

With strict criteria for size, quality and color.

Individually graded and backed with a report.

Diamonds engraved with unique identification  
and guaranteed conflict-free. Insured.

You're not just buying diamonds and gemstones —  
you're buying confidence.







## *Diamond Extreme*

1, 2, 3... What is the perfect number of diamond bands to wear? The answer is anything goes. Wear one alone as a wedding or anniversary band. Add one on each side of an engagement ring to double the diamond sparkle. Stack three for a fashion statement. Mix and match colors, shapes, sizes, and metal types for a style as unique as your customer.

Our recommendation: Be sure to stock at least five styles from this trend.



*Above, clockwise from bottom left: 2 seven-stone anniversary bands **68747** (p 65) on either side of eternity band **65461** (p 60); eternity band **65462** (p 60); anniversary band **68050** (p 63) and three stackable eternity bands **62318** (p 65). On facing page, left to right, anniversary band **65459** (p 60), seven-stone anniversary band **68747** (p 65) and eternity band **65460** (p 60).*



**65462** Eternity band, 14kt white. Mounting  
#**121524** (Also available in half sizes.)

Diamond ct tw	Size	Price
2	5	\$5,239
2	6	\$5,299
2	7	\$4,775
2	8	\$4,515



**65461** Eternity band, 14kt white. Mounting  
#**121523** (Also available in half sizes.)

Diamond ct tw	Size	Price
1½	5	\$4,469
1½	6	\$4,199
1½	7	\$4,485
1½	8	\$3,995



**65462, 65461, 65460**  
and **65459**



**65460** Eternity band, 14kt white. Mounting  
#**121522** (Also available in half sizes.)

Diamond ct tw	Size	Price
1	5	\$2,459
1	6	\$2,615
1	7	\$2,719
1	8	\$2,915



**65459** Eternity band, 14kt white. Mounting #**121521**  
(Also available in half sizes.)

Diamond ct tw	Size	Price
½	5	\$1,585
½	6	\$1,765
½	7	\$1,839
½	8	\$2,005

\*Center diamond sold separately.

**65463** Eternity band, 14kt white. Mounting  
#121584 (Also available in half sizes.)

Diamond ct tw	Size	Price
5⁄8	5	\$2,209
3⁄4	6	\$2,315
3⁄4	7	\$2,409
3⁄4	8	\$2,599



**65463**



**60238** Eternity band, 14kt white. Mounting #SH89  
(Also available in half sizes.)

Diamond ct tw	Size	Price
1 1⁄2	4	\$3,405
1 1⁄4	5	\$3,595
1 1⁄2	6	\$3,739
1 1⁄2	7	\$3,895
1 3⁄8	8	\$4,045



**60238 and 60025**



**60025** Eternity band, 14kt white. Mounting #SH87  
(Also available in half sizes.)

Diamond ct tw	Size	Price
7⁄8	4	\$2,615
9⁄10	5	\$2,739
9⁄10	6	\$2,759
1	7	\$2,955
1	8	\$3,039



**65525**



**65525** Eternity band, 14kt white. Mounting  
#121580 (Also available in half sizes.)

Diamond ct tw	Size	Price
1⁄2	5	\$1,915
1⁄2	6	\$1,959
3⁄4	7	\$2,835
3⁄4	8	\$2,875





**68013** Anniversary band,  $\frac{1}{2}$  ct tw, 14kt white,  
\$2,979. Mounting #**121691**



**68014** Anniversary band,  $\frac{3}{8}$  ct tw, 14kt white,  
\$2,845. Mounting #**121701**



**68013, 68014, 68012**  
and **67956**



**68012** Anniversary band,  $\frac{3}{8}$  ct tw, 14kt white,  
\$2,449. Mounting #**121689**



**67956** Anniversary band,  $\frac{1}{2}$  ct tw, 14kt white,  
\$2,755. Mounting #**121690**

**68041** Anniversary band,  $\frac{3}{8}$  ct tw, 14kt white,  
\$2,515. Mounting #**121707**



**68041, 68052**  
and **68050**

**68052** Anniversary band,  $\frac{1}{2}$  ct tw, 14kt white,  
\$3,199. Mounting #**121700**



**68050** Anniversary band,  $\frac{5}{8}$  ct tw, 14kt white,  
\$3,499. Mounting #**121687**



**68040**

**68040** Anniversary band,  $\frac{5}{8}$  ct tw, 14kt white,  
\$3,909. Mounting #**121704**





**67962** Anniversary band,  $\frac{1}{4}$  ct tw, 14kt white,  
\$1,725. Mounting #**121694**



**67962**



**68053** Anniversary band,  $\frac{1}{8}$  ct tw, 14kt white,  
\$1,599. Mounting #**121712**



**68053** and **68051**



**68051** Anniversary band,  $\frac{3}{4}$  ct tw, 14kt white,  
\$3,365. Mounting #**121692** (Only available in  
14kw.)



**67957**



**67957** Anniversary band,  $\frac{1}{2}$  ct tw, 14kt white,  
\$2,645. Mounting #**121693**



**62318** Eternity band, ⅔ ct tw. Mounting #121581

Metal quality	Size	Price
14kt yellow	7	\$1,165
14kt white	7	\$1,175
14kt rose	7	\$1,165



**62318**



**68747** Seven-stone anniversary band, 14kt white, \$11,815. Mounting #121824

Diamond ct tw	Price
2	\$11,815
1½	\$5,275
1	\$3,645



**68747**



**68846**

**68846** Anniversary band, ½ ct tw, 14kt white. \$1,845. Mounting #121823





*Behind every  
“How did you know?”  
there’s a great jeweler.*



*And behind every great jeweler,  
there's Stuller.*

It's about more than just making a sale. You stand side by side with your customers, helping them design the moments that shape their lives. And we're here, behind the scenes, making sure you can keep every promise. From vintage inspiration engagements to classic solitaires, we have the bridal styles your customers want. Lean on us to provide you with overnight delivery of the products and services you need. That's the beauty of it all.



STULLER

Triple-key prices based on \$1,900 gold market and \$1,900 platinum markets.

Diamond quality is SI2-3, G-H color unless otherwise noted.

Mountings are stocked in finger size 7 unless otherwise noted.

Product is enlarged to show detail.



BRIDAL



JEWELRY



MOUNTINGS



DIAMONDS



GEMSTONES



FINDINGS



METALS



TOOLS



PACKAGING

[stuller.com](http://stuller.com)

800-877-7777

Brochure #887